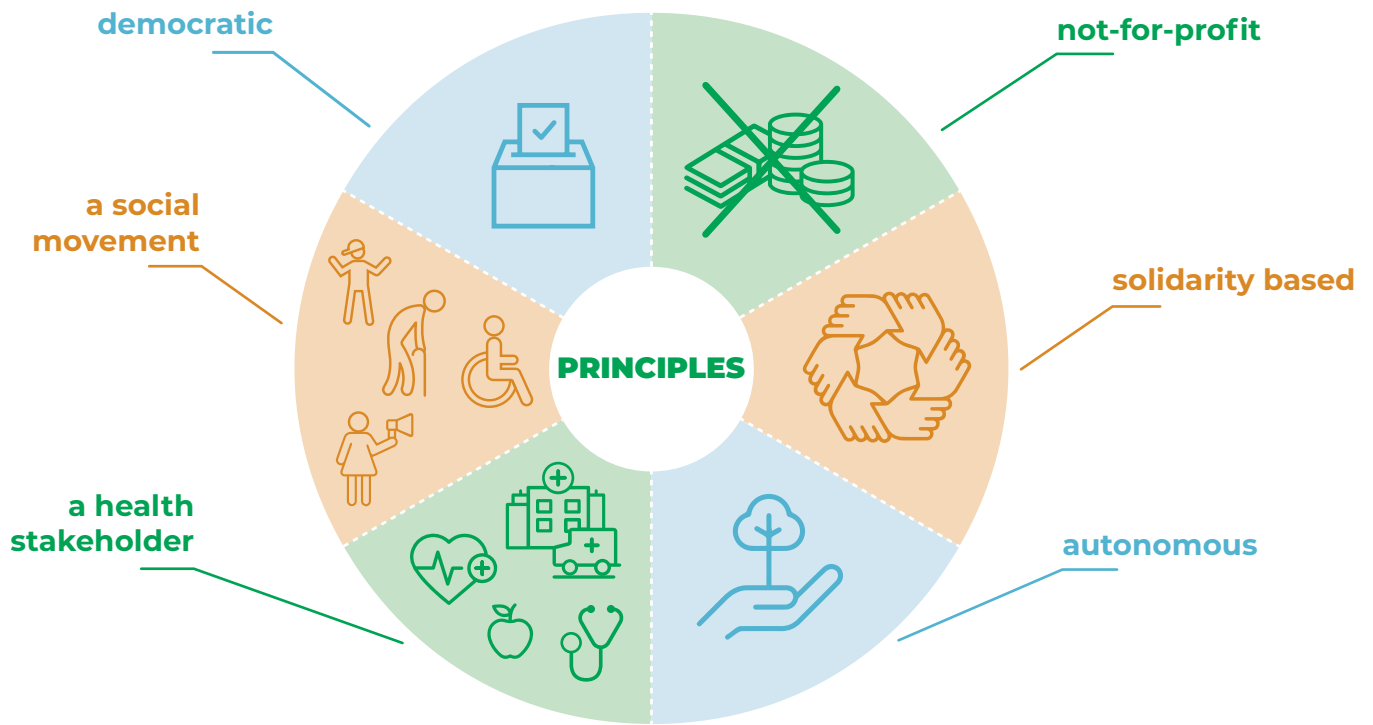


What is a health mutual?

A HEALTH MUTUAL IS



A HEALTH MUTUAL ACTS AS

social insurer



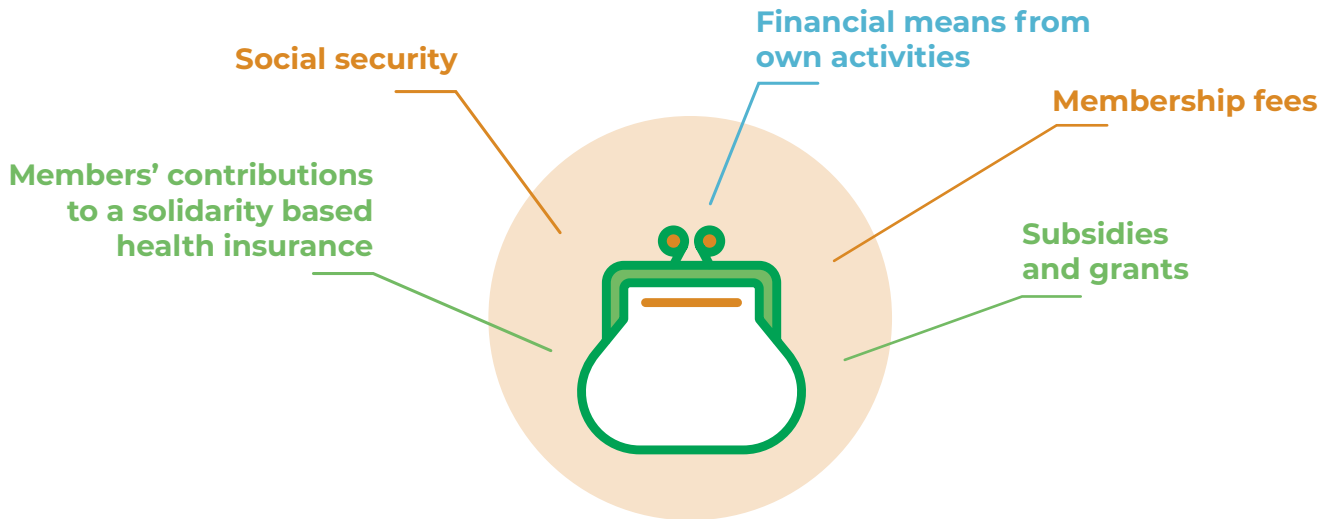
social movement



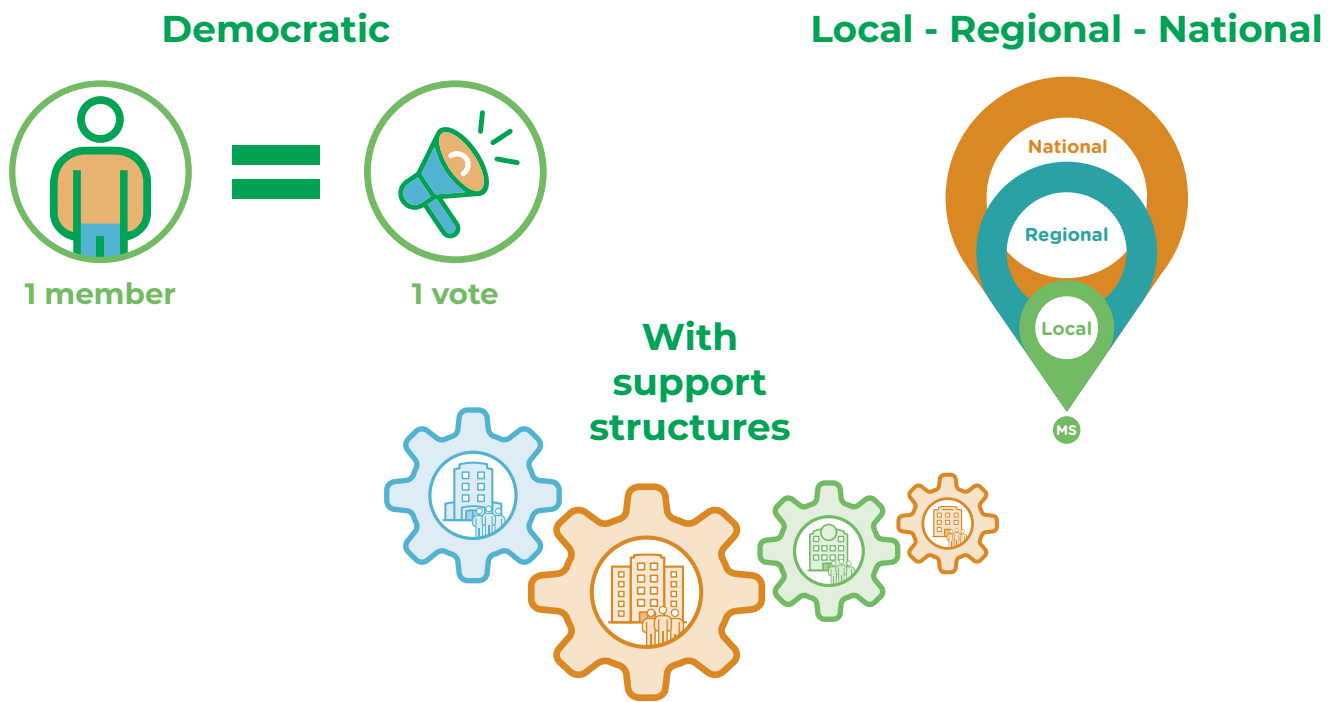
social entrepreneur



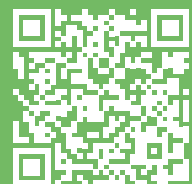
A HEALTH MUTUAL IS FINANCED THROUGH



A HEALTH MUTUAL HAS A STRUCTURE



The main aim of the “identity card” is to make it easier to assess the various elements that identify an organisation as a “health mutual”. Intended both for the organisations themselves and for the various stakeholders, it is a tool to help making decisions and for training. It is based on a common and widely shared understanding of the characteristics of a health mutual. The aim is to enable international cooperation to strengthen this “mutualist model” as a means of improving the effective realisation of the right to health.



To know more...